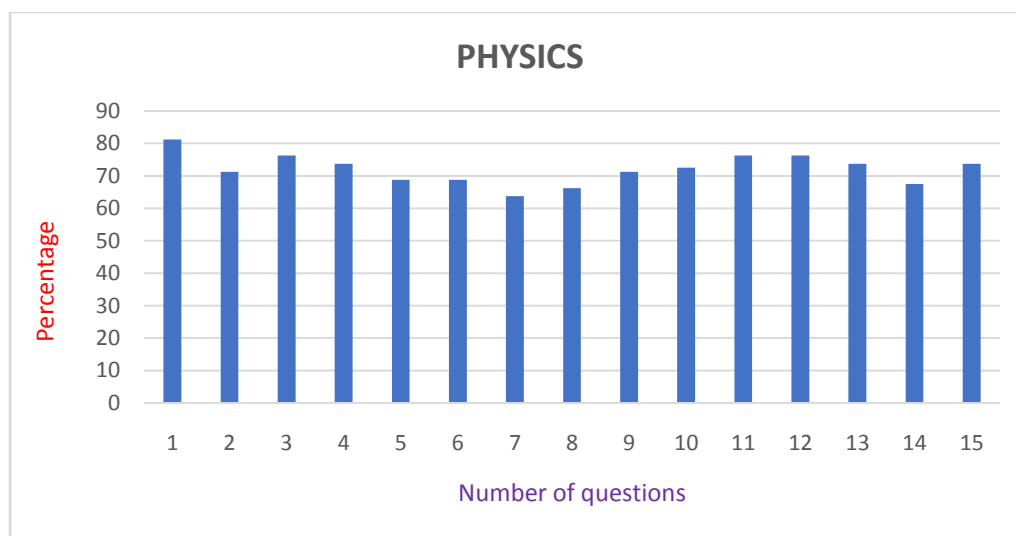


FEEDBACK FROM STUDENTS ON SYLLABUS - 2020-2021

DEPARTMENT OF PHYSICS (BSc)

SI NO	PARTICULARS	PERCENTAGE
1	Contemporary relevance of courses and course content	81.25
2	Inclusion of latest developments in the subject	71.25
3	Depth of coverage of course content	76.25
4	Extent of coverage of course content	73.75
5	Orientation to higher studies	68.75
6	Practical orientation	68.75
7	Opportunities for the promotion of life skills & employability skills	63.75
8	Opportunities for the promotion of critical, analytical and creative thinking skills	66.25
9	Value orientation	71.25
10	Suitability to your intellectual level	72.5
11	Integration to what you have learned up to Plus Two	76.25
12	Effectiveness in enriching your knowledge base	76.25
13	Effectiveness of evaluation system (internal & external)	73.75
14	Effectiveness in equipping you to take up the challenges of future	67.5
15	Overall rating of the programme and the syllabus	73.75

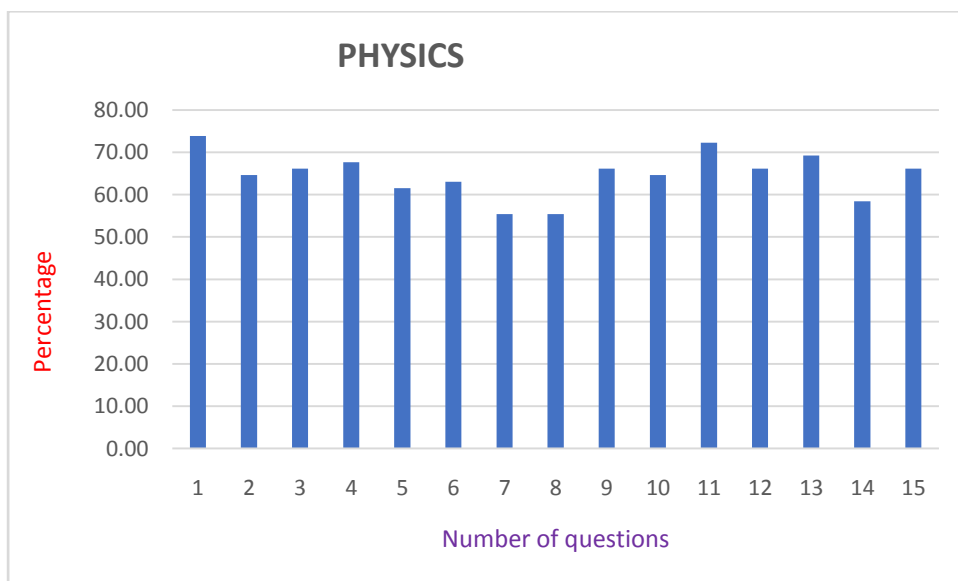


Suggestions for improvement: -

- 1 To be more interesting

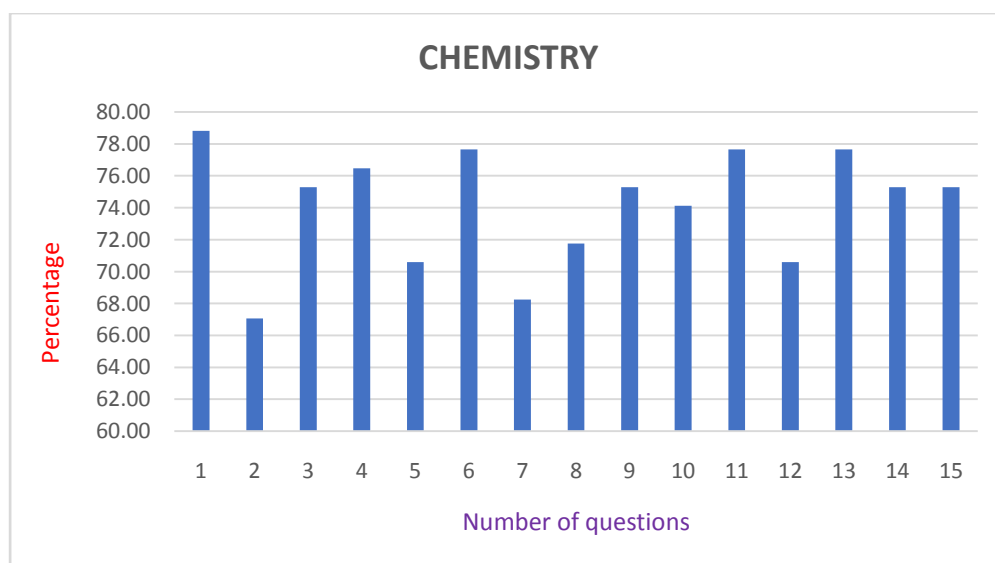
DEPARTMENT OF PHYSICS (MSc)

SI NO	PARTICULARS	PERCENTAGE
1	Contemporary relevance of courses and course content	73.85
2	Inclusion of latest developments in the subject	64.62
3	Depth of coverage of course content	66.15
4	Extent of coverage of course content	67.69
5	Orientation to higher studies	61.54
6	Practical orientation	63.08
7	Opportunities for the promotion of life skills & employability skills	55.38
8	Opportunities for the promotion of critical, analytical and creative thinking skills	55.38
9	Value orientation	66.15
10	Suitability to your intellectual level	64.62
11	Integration to what you have learned up to Plus Two	72.31
12	Effectiveness in enriching your knowledge base	66.15
13	Effectiveness of evaluation system (internal & external)	69.23
14	Effectiveness in equipping you to take up the challenges of future	58.46
15	Overall rating of the transaction methods	66.15



DEPARTMENT OF CHEMISTRY (BSc)

SI NO	PARTICULARS	PERCENTAGE
1	Contemporary relevance of courses and course content	78.82
2	Inclusion of latest developments in the subject	67.06
3	Depth of coverage of course content	75.29
4	Extent of coverage of course content	76.47
5	Orientation to higher studies	70.59
6	Practical orientation	77.65
7	Opportunities for the promotion of life skills & employability skills	68.24
8	Opportunities for the promotion of critical, analytical and creative thinking skills	71.76
9	Value orientation	75.29
10	Suitability to your intellectual level	74.12
11	Integration to what you have learned up to Plus Two	77.65
12	Effectiveness in enriching your knowledge base	70.59
13	Effectiveness of evaluation system (internal & external)	77.65
14	Effectiveness in equipping you to take up the challenges of future	75.29
15	Overall rating of the transaction methods	75.29

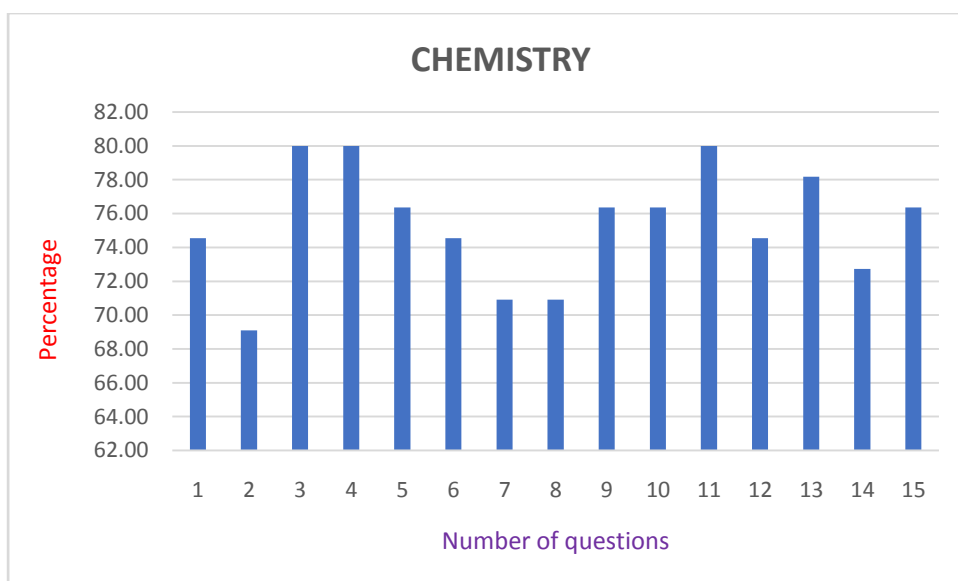


Suggestions for improvement: -

- 1 Provide for meaningful teacher-student interactions.

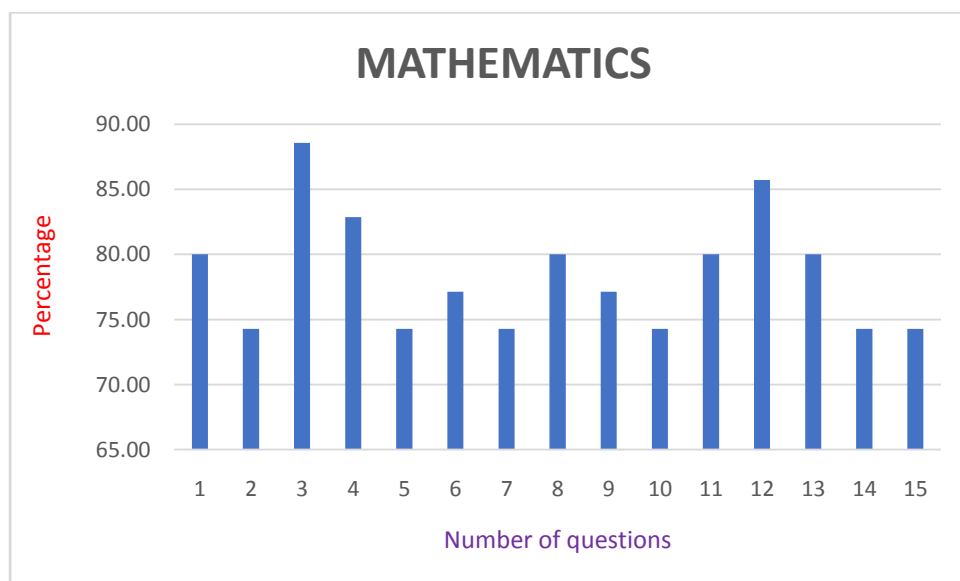
DEPARTMENT OF CHEMISTRY (MSc)

SI NO	PARTICULARS	PERCENTAGE
1	Contemporary relevance of courses and course content	74.55
2	Inclusion of latest developments in the subject	69.09
3	Depth of coverage of course content	80.00
4	Extent of coverage of course content	80.00
5	Orientation to higher studies	76.36
6	Practical orientation	74.55
7	Opportunities for the promotion of life skills & employability skills	70.91
8	Opportunities for the promotion of critical, analytical and creative thinking skills	70.91
9	Value orientation	76.36
10	Suitability to your intellectual level	76.36
11	Integration to what you have learned up to Plus Two	80.00
12	Effectiveness in enriching your knowledge base	74.55
13	Effectiveness of evaluation system (internal & external)	78.18
14	Effectiveness in equipping you to take up the challenges of future	72.73
15	Overall rating of the transaction methods	76.36



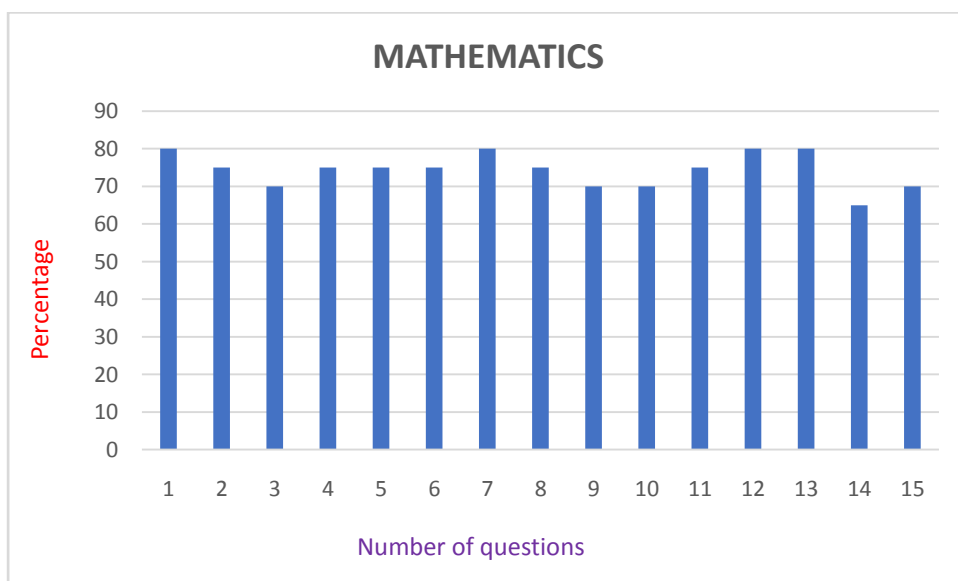
DEPARTMENT OF MATHEMATICS (MSc)

SI NO	PARTICULARS	PERCENTAGE
1	Contemporary relevance of courses and course content	80.00
2	Inclusion of latest developments in the subject	74.29
3	Depth of coverage of course content	88.57
4	Extent of coverage of course content	82.86
5	Orientation to higher studies	74.29
6	Practical orientation	77.14
7	Opportunities for the promotion of life skills & employability skills	74.29
8	Opportunities for the promotion of critical, analytical and creative thinking skills	80.00
9	Value orientation	77.14
10	Suitability to your intellectual level	74.29
11	Integration to what you have learned up to Plus Two	80.00
12	Effectiveness in enriching your knowledge base	85.71
13	Effectiveness of evaluation system (internal & external)	80.00
14	Effectiveness in equipping you to take up the challenges of future	74.29
15	Overall rating of the transaction methods	74.29



DEPARTMENT OF MATHEMATICS (BSc)

SI NO	PARTICULARS	PERCENTAGE
1	Contemporary relevance of courses and course content	80
2	Inclusion of latest developments in the subject	75
3	Depth of coverage of course content	70
4	Extent of coverage of course content	75
5	Orientation to higher studies	75
6	Practical orientation	75
7	Opportunities for the promotion of life skills & employability skills	80
8	Opportunities for the promotion of critical, analytical and creative thinking skills	75
9	Value orientation	70
10	Suitability to your intellectual level	70
11	Integration to what you have learned up to Plus Two	75
12	Effectiveness in enriching your knowledge base	80
13	Effectiveness of evaluation system (internal & external)	80
14	Effectiveness in equipping you to take up the challenges of future	65
15	Overall rating of the transaction methods	70

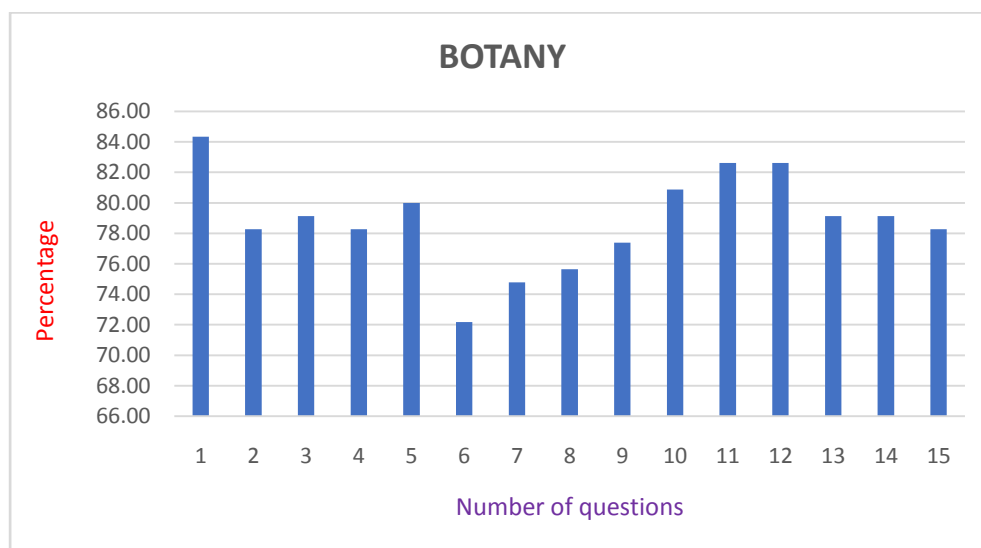


Suggestions for improvement: -

1. Rather than focusing in finishing particular portions in particular time and just memorizing it for exam it would be great if there is more chance and time to explore.

DEPARTMENT OF BOTANY

SI NO	PARTICULARS	PERCENTAGE
1	Contemporary relevance of courses and course content	84.35
2	Inclusion of latest developments in the subject	78.26
3	Depth of coverage of course content	79.13
4	Extent of coverage of course content	78.26
5	Orientation to higher studies	80.00
6	Practical orientation	72.17
7	Opportunities for the promotion of life skills & employability skills	74.78
8	Opportunities for the promotion of critical, analytical and creative thinking skills	75.65
9	Value orientation	77.39
10	Suitability to your intellectual level	80.87
11	Integration to what you have learned up to Plus Two	82.61
12	Effectiveness in enriching your knowledge base	82.61
13	Effectiveness of evaluation system (internal & external)	79.13
14	Effectiveness in equipping you to take up the challenges of future	79.13
15	Overall rating of the transaction methods	78.26



Suggestions for improvement: -

1. It is not about the department unlike this it's about college and university in which they only concentrate on marks rather than skills and personal development.
2. The academic time and weightage of syllabus is in great imbalance, as they compel students to earn only marks rather than knowledge.
3. Students want to explore outside the classroom

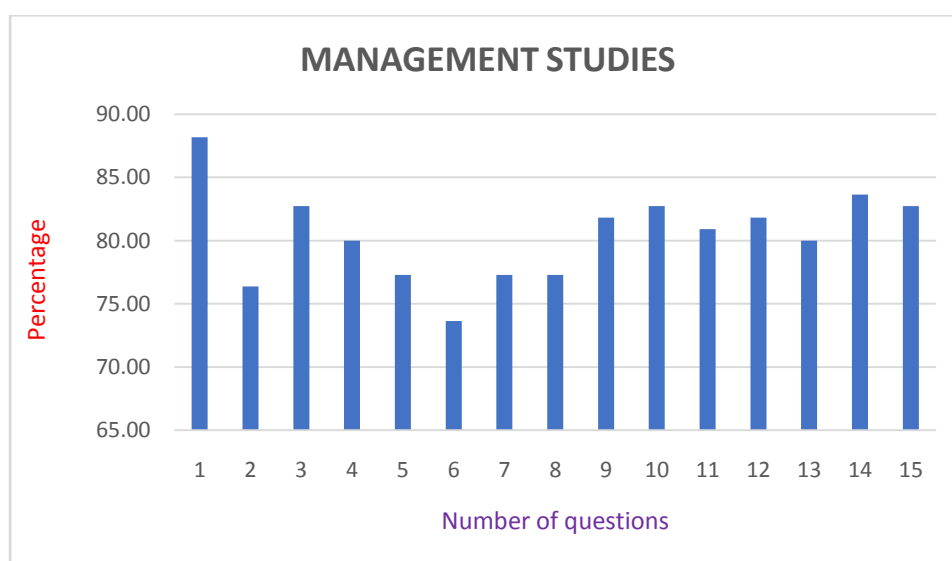
DEPARTMENT OF COMMERCE

SI NO	PARTICULARS	PERCENTAGE
1	Contemporary relevance of courses and course content	76.67
2	Inclusion of latest developments in the subject	73.33
3	Depth of coverage of course content	80.00
4	Extent of coverage of course content	73.33
5	Orientation to higher studies	70.00
6	Practical orientation	66.67
7	Opportunities for the promotion of life skills & employability skills	70.00
8	Opportunities for the promotion of critical, analytical and creative thinking skills	70.00
9	Value orientation	76.67
10	Suitability to your intellectual level	76.67
11	Integration to what you have learned up to Plus Two	76.67
12	Effectiveness in enriching your knowledge base	83.33
13	Effectiveness of evaluation system (internal & external)	73.33
14	Effectiveness in equipping you to take up the challenges of future	73.33
15	Overall rating of the transaction methods	76.67



DEPARTMENT OF MANAGEMENT STUDIES

SI NO	PARTICULARS	PERCENTAGE
1	Contemporary relevance of courses and course content	88.18
2	Inclusion of latest developments in the subject	76.36
3	Depth of coverage of course content	82.73
4	Extent of coverage of course content	80.00
5	Orientation to higher studies	77.27
6	Practical orientation	73.64
7	Opportunities for the promotion of life skills & employability skills	77.27
8	Opportunities for the promotion of critical, analytical and creative thinking skills	77.27
9	Value orientation	81.82
10	Suitability to your intellectual level	82.73
11	Integration to what you have learned up to Plus Two	80.91
12	Effectiveness in enriching your knowledge base	81.82
13	Effectiveness of evaluation system (internal & external)	80.00
14	Effectiveness in equipping you to take up the challenges of future	83.64
15	Overall rating of the transaction methods	82.73

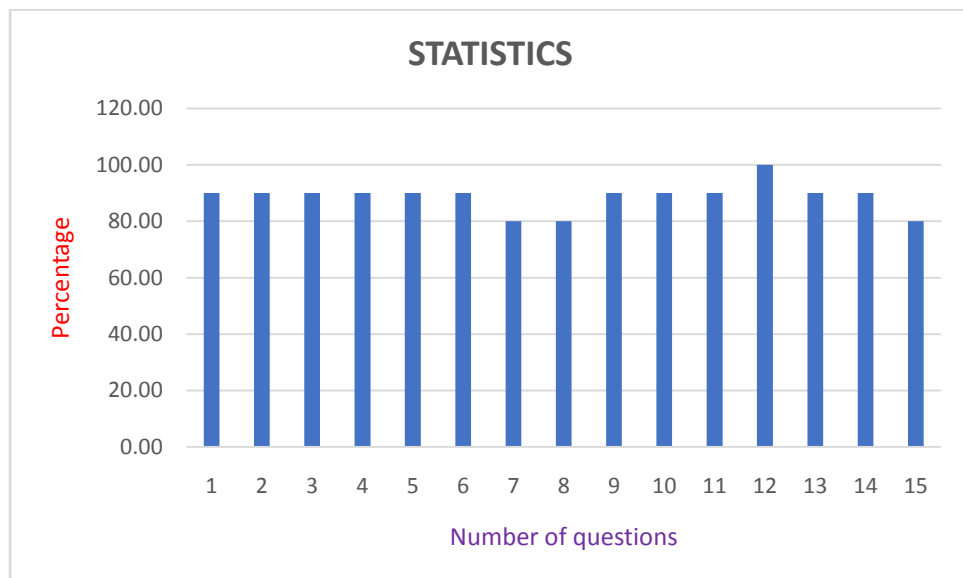


Suggestions for improvement: -

1. Avoid repetition of content in Subject and reduction of modules.
2. Add recent trends and development
3. Improve All facilities.
4. Internals marks should be double checked. And proper evaluation of students should be conducted. Mainly the guest lectures are the once who is giving marks according to the behaviour and likes of them and not on the evaluation or standard of students. Proper printed notes should be provided in the pandemic situation for the wellbeing of students

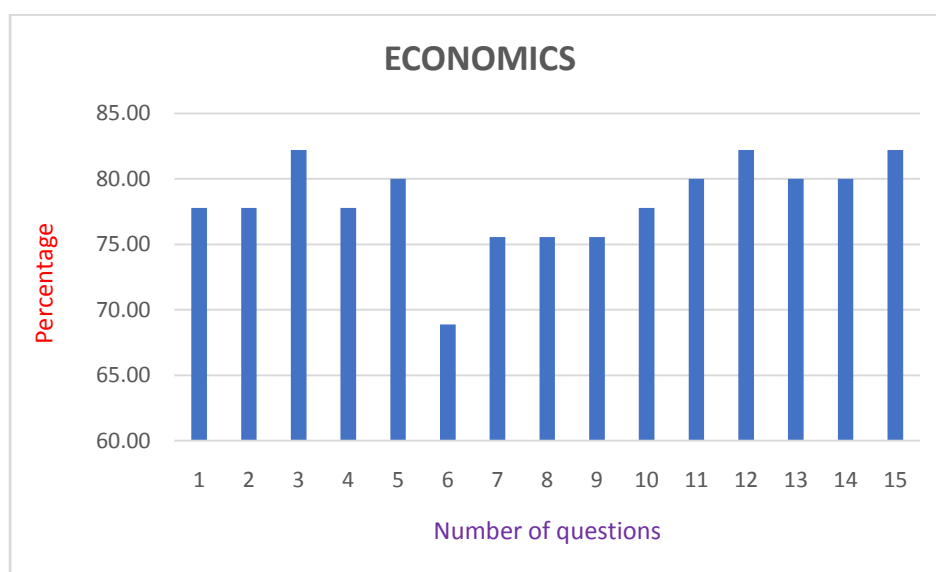
DEPARTMENT OF STATISTICS

SI NO	PARTICULARS	PERCENTAGE
1	Contemporary relevance of courses and course content	90.00
2	Inclusion of latest developments in the subject	90.00
3	Depth of coverage of course content	90.00
4	Extent of coverage of course content	90.00
5	Orientation to higher studies	90.00
6	Practical orientation	90.00
7	Opportunities for the promotion of life skills & employability skills	80.00
8	Opportunities for the promotion of critical, analytical and creative thinking skills	80.00
9	Value orientation	90.00
10	Suitability to your intellectual level	90.00
11	Integration to what you have learned up to Plus Two	90.00
12	Effectiveness in enriching your knowledge base	100.00
13	Effectiveness of evaluation system (internal & external)	90.00
14	Effectiveness in equipping you to take up the challenges of future	90.00
15	Overall rating of the transaction methods	80.00



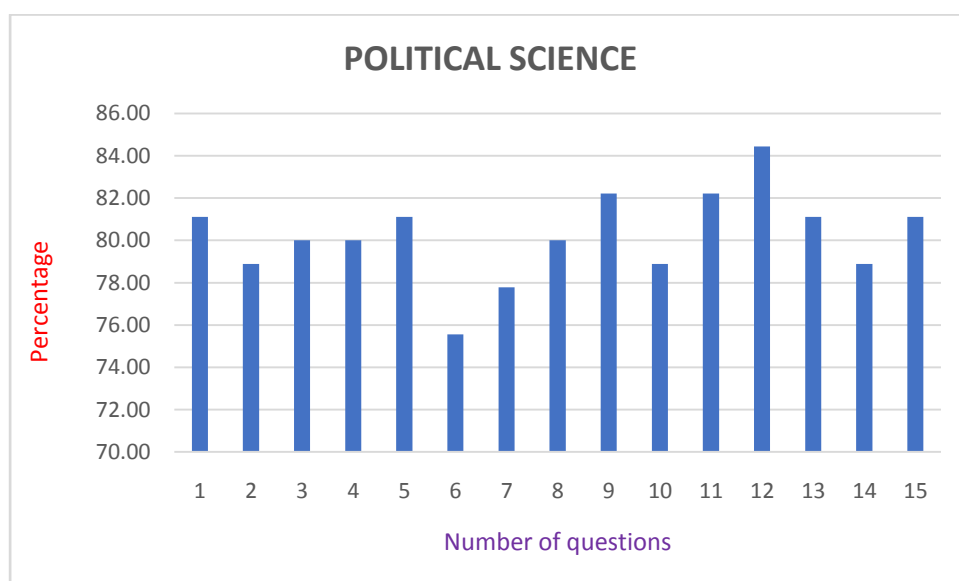
DEPARTMENT OF ECONOMICS

SI NO	PARTICULARS	PERCENTAGE
1	Contemporary relevance of courses and course content	77.78
2	Inclusion of latest developments in the subject	77.78
3	Depth of coverage of course content	82.22
4	Extent of coverage of course content	77.78
5	Orientation to higher studies	80.00
6	Practical orientation	68.89
7	Opportunities for the promotion of life skills & employability skills	75.56
8	Opportunities for the promotion of critical, analytical and creative thinking skills	75.56
9	Value orientation	75.56
10	Suitability to your intellectual level	77.78
11	Integration to what you have learned up to Plus Two	80.00
12	Effectiveness in enriching your knowledge base	82.22
13	Effectiveness of evaluation system (internal & external)	80.00
14	Effectiveness in equipping you to take up the challenges of future	80.00
15	Overall rating of the transaction methods	82.22



DEPARTMENT OF POLITICAL SCIENCE

SI NO	PARTICULARS	PERCENTAGE
1	Contemporary relevance of courses and course content	81.11
2	Inclusion of latest developments in the subject	78.89
3	Depth of coverage of course content	80.00
4	Extent of coverage of course content	80.00
5	Orientation to higher studies	81.11
6	Practical orientation	75.56
7	Opportunities for the promotion of life skills & employability skills	77.78
8	Opportunities for the promotion of critical, analytical and creative thinking skills	80.00
9	Value orientation	82.22
10	Suitability to your intellectual level	78.89
11	Integration to what you have learned up to Plus Two	82.22
12	Effectiveness in enriching your knowledge base	84.44
13	Effectiveness of evaluation system (internal & external)	81.11
14	Effectiveness in equipping you to take up the challenges of future	78.89
15	Overall rating of the transaction methods	81.11

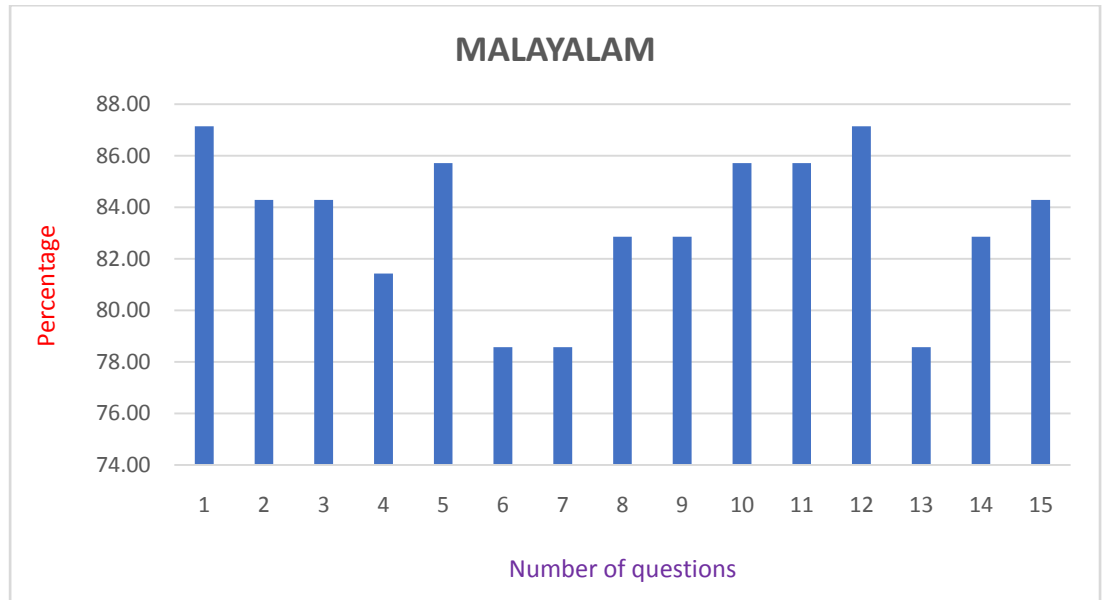


Suggestions for improvements:

1. Repeated topics should be changed and new topics should be implemented
2. Master Degree Courses Wanted

DEPARTMENT OF MALAYALAM

SI NO	PARTICULARS	PERCENTAGE
1	Contemporary relevance of courses and course content	87.14
2	Inclusion of latest developments in the subject	84.29
3	Depth of coverage of course content	84.29
4	Extent of coverage of course content	81.43
5	Orientation to higher studies	85.71
6	Practical orientation	78.57
7	Opportunities for the promotion of life skills & employability skills	78.57
8	Opportunities for the promotion of critical, analytical and creative thinking skills	82.86
9	Value orientation	82.86
10	Suitability to your intellectual level	85.71
11	Integration to what you have learned up to Plus Two	85.71
12	Effectiveness in enriching your knowledge base	87.14
13	Effectiveness of evaluation system (internal & external)	78.57
14	Effectiveness in equipping you to take up the challenges of future	82.86
15	Overall rating of the transaction methods	84.29

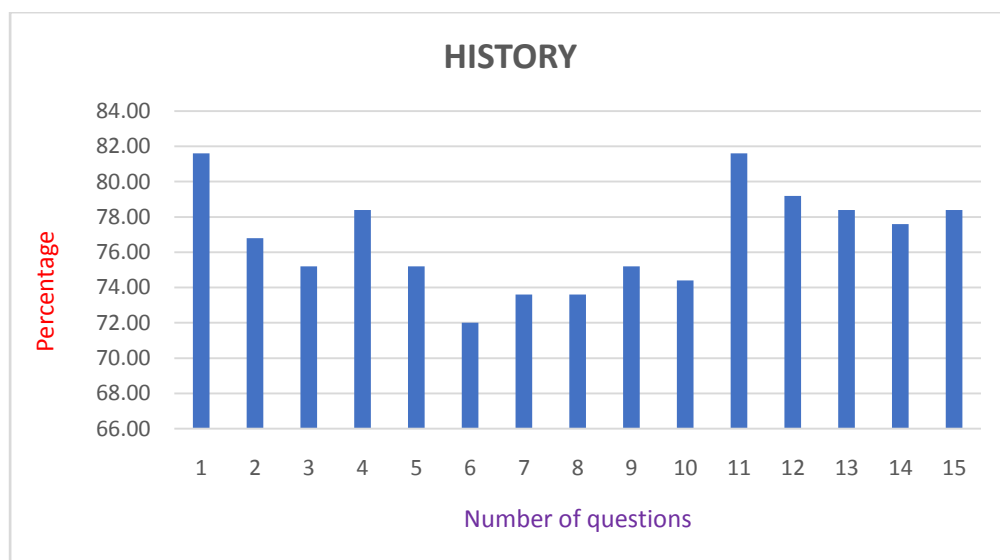


Suggestions for improvements:

- Exam questions - question bank
തയ്യാറാക്കി അതിൽനിന്ന് തിരഞ്ഞെടുക്കുവുന്നതാണ് .
- Value orientation

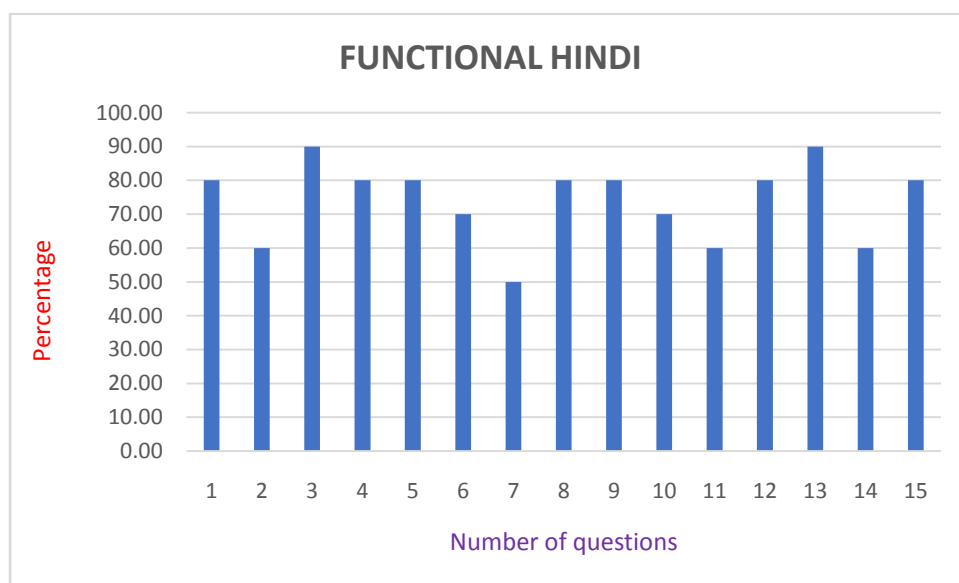
DEPARTMENT OF HISTORY

SI NO	PARTICULARS	PERCENTAGE
1	Contemporary relevance of courses and course content	81.60
2	Inclusion of latest developments in the subject	76.80
3	Depth of coverage of course content	75.20
4	Extent of coverage of course content	78.40
5	Orientation to higher studies	75.20
6	Practical orientation	72.00
7	Opportunities for the promotion of life skills & employability skills	73.60
8	Opportunities for the promotion of critical, analytical and creative thinking skills	73.60
9	Value orientation	75.20
10	Suitability to your intellectual level	74.40
11	Integration to what you have learned up to Plus Two	81.60
12	Effectiveness in enriching your knowledge base	79.20
13	Effectiveness of evaluation system (internal & external)	78.40
14	Effectiveness in equipping you to take up the challenges of future	77.60
15	Overall rating of the transaction methods	78.40



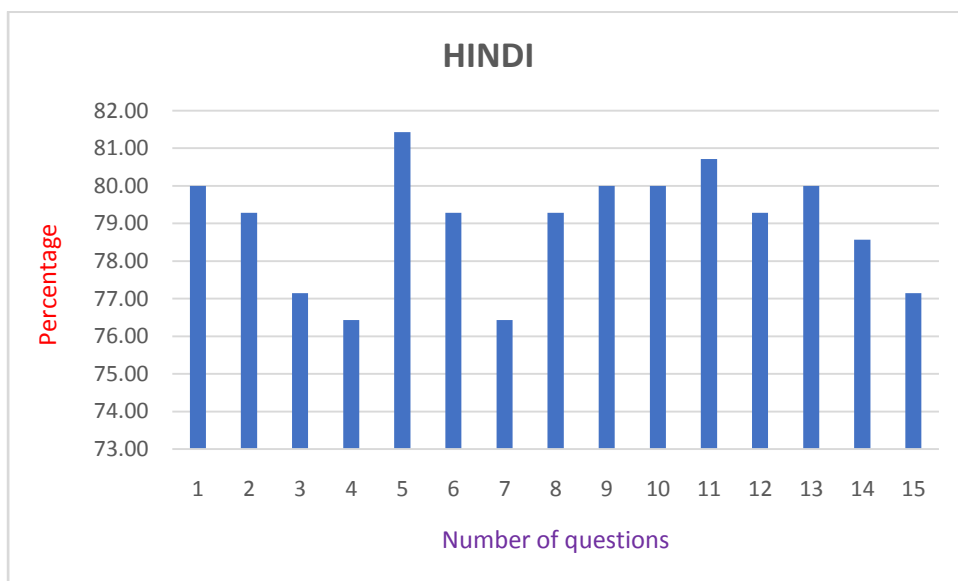
DEPARTMENT OF FUNCTIONAL HINDI

SI NO	PARTICULARS	PERCENTAGE
1	Contemporary relevance of courses and course content	80.00
2	Inclusion of latest developments in the subject	60.00
3	Depth of coverage of course content	90.00
4	Extent of coverage of course content	80.00
5	Orientation to higher studies	80.00
6	Practical orientation	70.00
7	Opportunities for the promotion of life skills & employability skills	50.00
8	Opportunities for the promotion of critical, analytical and creative thinking skills	80.00
9	Value orientation	80.00
10	Suitability to your intellectual level	70.00
11	Integration to what you have learned up to Plus Two	60.00
12	Effectiveness in enriching your knowledge base	80.00
13	Effectiveness of evaluation system (internal & external)	90.00
14	Effectiveness in equipping you to take up the challenges of future	60.00
15	Overall rating of the transaction methods	80.00



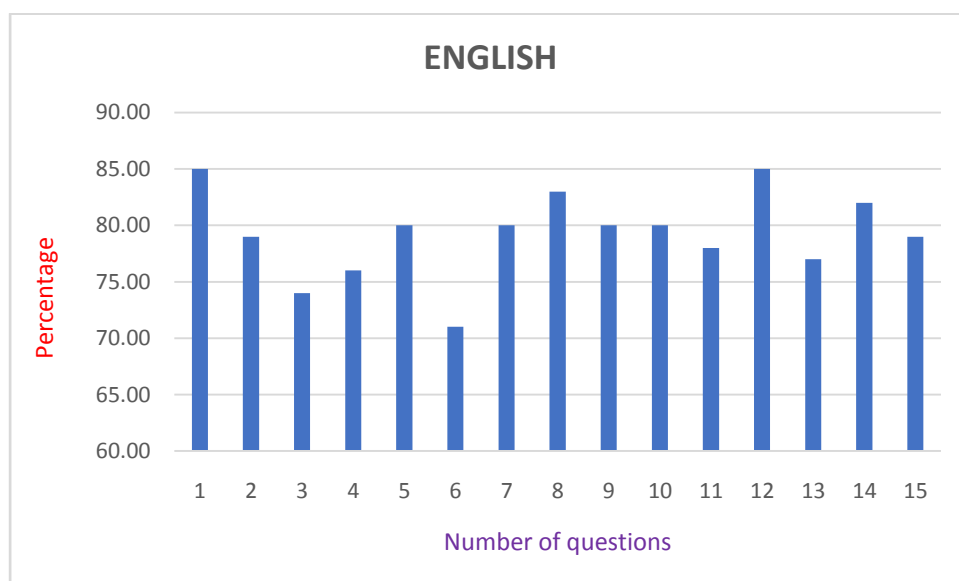
DEPARTMENT OF HINDI

SI NO	PARTICULARS	PERCENTAGE
1	Contemporary relevance of courses and course content	80.00
2	Inclusion of latest developments in the subject	79.29
3	Depth of coverage of course content	77.14
4	Extent of coverage of course content	76.43
5	Orientation to higher studies	81.43
6	Practical orientation	79.29
7	Opportunities for the promotion of life skills & employability skills	76.43
8	Opportunities for the promotion of critical, analytical and creative thinking skills	79.29
9	Value orientation	80.00
10	Suitability to your intellectual level	80.00
11	Integration to what you have learned up to Plus Two	80.71
12	Effectiveness in enriching your knowledge base	79.29
13	Effectiveness of evaluation system (internal & external)	80.00
14	Effectiveness in equipping you to take up the challenges of future	78.57
15	Overall rating of the transaction methods	77.14



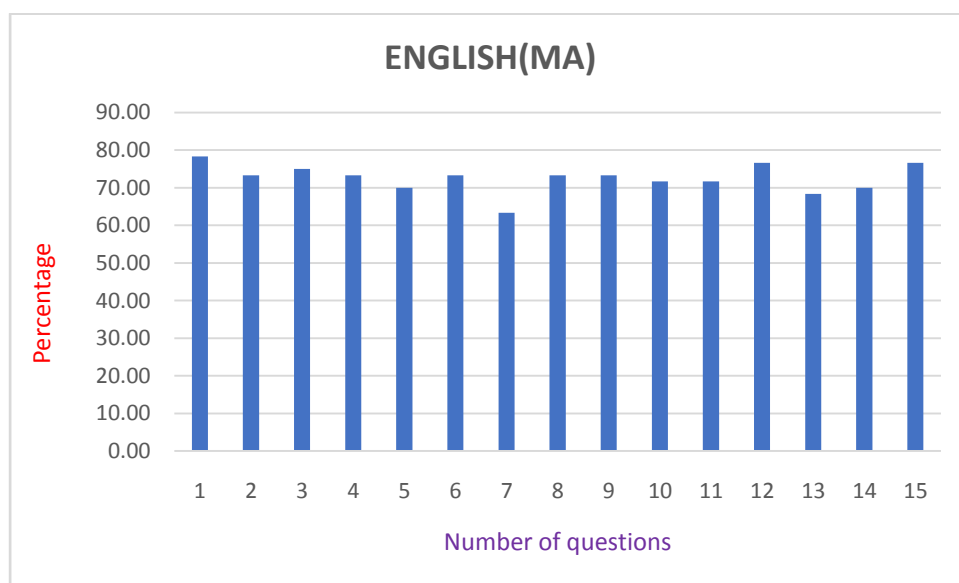
DEPARTMENT OF ENGLISH (BA)

SI NO	PARTICULARS	PERCENTAGE
1	Contemporary relevance of courses and course content	85.00
2	Inclusion of latest developments in the subject	79.00
3	Depth of coverage of course content	74.00
4	Extent of coverage of course content	76.00
5	Orientation to higher studies	80.00
6	Practical orientation	71.00
7	Opportunities for the promotion of life skills & employability skills	80.00
8	Opportunities for the promotion of critical, analytical and creative thinking skills	83.00
9	Value orientation	80.00
10	Suitability to your intellectual level	80.00
11	Integration to what you have learned up to Plus Two	78.00
12	Effectiveness in enriching your knowledge base	85.00
13	Effectiveness of evaluation system (internal & external)	77.00
14	Effectiveness in equipping you to take up the challenges of future	82.00
15	Overall rating of the transaction methods	79.00



DEPARTMENT OF ENGLISH (MA)

SI NO	PARTICULARS	PERCENTAGE
1	Contemporary relevance of courses and course content	78.33
2	Inclusion of latest developments in the subject	73.33
3	Depth of coverage of course content	75.00
4	Extent of coverage of course content	73.33
5	Orientation to higher studies	70.00
6	Practical orientation	73.33
7	Opportunities for the promotion of life skills & employability skills	63.33
8	Opportunities for the promotion of critical, analytical and creative thinking skills	73.33
9	Value orientation	73.33
10	Suitability to your intellectual level	71.67
11	Integration to what you have learned up to Plus Two	71.67
12	Effectiveness in enriching your knowledge base	76.67
13	Effectiveness of evaluation system (internal & external)	68.33
14	Effectiveness in equipping you to take up the challenges of future	70.00
15	Overall rating of the transaction methods	76.67

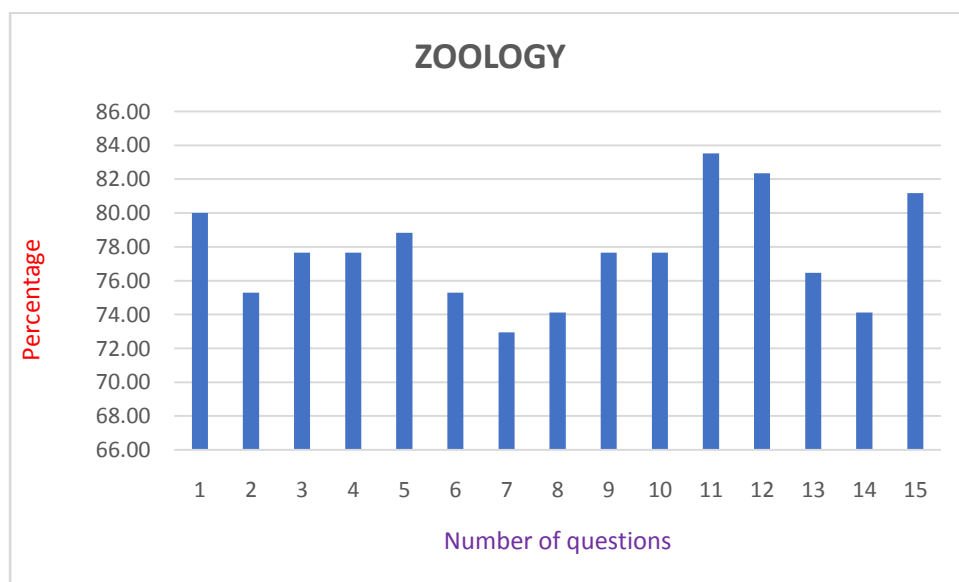


Suggestions for improvement:

1. Hard syllabus

DEPARTMENT OF ZOOLOGY

SI NO	PARTICULARS	PERCENTAGE
1	Contemporary relevance of courses and course content	80.00
2	Inclusion of latest developments in the subject	75.29
3	Depth of coverage of course content	77.65
4	Extent of coverage of course content	77.65
5	Orientation to higher studies	78.82
6	Practical orientation	75.29
7	Opportunities for the promotion of life skills & employability skills	72.94
8	Opportunities for the promotion of critical, analytical and creative thinking skills	74.12
9	Value orientation	77.65
10	Suitability to your intellectual level	77.65
11	Integration to what you have learned up to Plus Two	83.53
12	Effectiveness in enriching your knowledge base	82.35
13	Effectiveness of evaluation system (internal & external)	76.47
14	Effectiveness in equipping you to take up the challenges of future	74.12
15	Overall rating of the transaction methods	81.18



Suggestions for improvement:

1. Syllabus should encompass latest developments in the subject